

# Integrated Teacher Education Programs

Liberal Studies  
Department

**CSUDH**



DIRECTORY

**CSUDH**

CALIFORNIA STATE UNIVERSITY  
DOMINGUEZ HILLS

# Welcome!

**Dr. Jen Stacy, ITEP Coordinator**

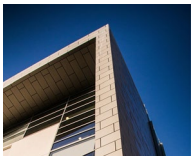
[jstacy@csudh.edu](mailto:jstacy@csudh.edu)

310.243.2323

COE 1431

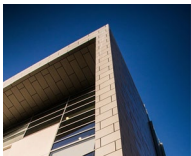
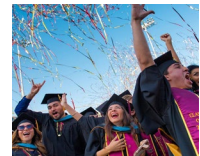
ITEP Website:

<https://sites.google.com/csudh-coe.org/csudhitep>



# Agenda

1. Description of Liberal Studies Major at CSUDH
1. Overview of the Integrated Teacher Education Program (ITEP)
1. Information about ITEP Summer Bridge Program



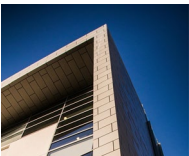
# Today's Materials



<http://bit.ly/itepsummer>

# Liberal Studies Major

- Students interested in becoming **elementary** or **special education** teachers.
- Want to teach high school? Major in the discipline that you want to teach!





**Dr. Jen Stacy**

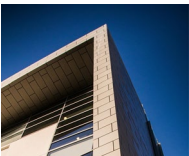
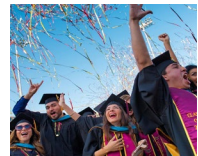
**CSUDH** | LBS FACULTY

# Transferring to CSUDH: Liberal Studies

Check your lower division general education courses while @ your CC.

Attend a LSAM (Liberal Studies Advisement Meeting) this spring and a New Student Orientation this summer.

Consider completing lower division major courses in the summer.



# Lower Division LBS Major Classes

**ANT 102/HIS 120 (Ancient Civilizations)**

**ART 100 or THE 100 or DAN 130 or MUS 101 (LD VAPA)**

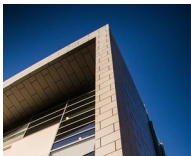
**BIO 102 (General Biology Lecture)**

**BIO 103 (General Biology Lab)**

**LBS 205 (Child/Adolescent Development)**

**MAT 107 (Math for Elem. Teachers/Real Numbers)**

**MAT 207 (Math for Elem. Teachers/Geometry & Statistics)**





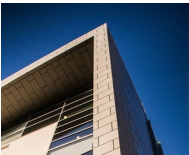
# Transferring to CSUDH: Resources

LBS E-Resource Page: [Required Courses \(Lower Division GEs, Transferrable Courses, and Major Courses\)](#)

Community College Articulation Grid

- [Click Here](#)
- See Google Folder

[Assist.org](#)



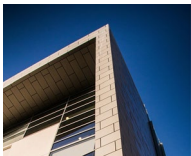
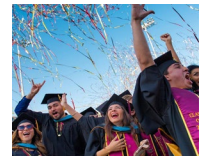
# LBS Pathways to Becoming a Teacher

## Regular Pathway

- Complete your B.A. @ your own pace.
- Return to complete your credential.
  - 2 semesters for LBS graduates at CSUDH.

## ITEP Pathway

- Complete your B.A. & credential simultaneously.
- Full-time program.
- Accelerated program.



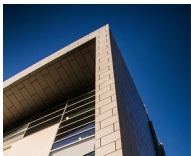
# Integrated Teacher Education Programs



To be a teacher in California, you need a Bachelor's Degree and a Teaching Credential.

The ITEP program accelerates this process.

- Freshmen can do ITEP in 4 years.
- Transfers can do ITEP in 2 years.





**Will you take the 405 or the 110?**

Each path leads you to the same place.

One is not better than the other.

Each offer different entry points and exit points,

Which one serves your needs?

# Integrated Teacher Education Programs at CSUDH

## ITEP

Bachelor's Degree in Liberal Studies

Multiple Subject Teaching Credential

Concentration in Area of Interest

- Open to all Liberal Studies students.
- Students are encouraged to select the Early Teaching & Learning Option.

High Need Area!

## ITEP-ABC

Bachelor's Degree in Liberal Studies

Multiple Subject Teaching Credential

Bilingual Authorization (Spanish Concentration)

- Students should have a working knowledge of Spanish.
- Students complete fieldwork and student teaching in bilingual classrooms.

High Need Area!

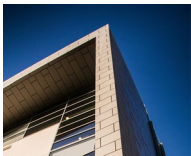
## Special Ed.

Bachelor's Degree in Liberal Studies

Education Specialist Credential w/ Mild/Moderate Specialization

Educating Children w/ Disabilities Concentration

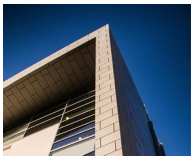
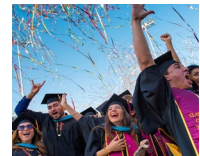
- Students want to become a Special Education teacher.
- Students complete fieldwork and student teaching in special education classrooms.



# Ask an ITEPer!

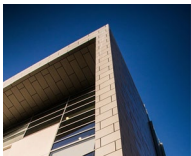
Why did you select the ITEP Program?

Which program are you in?



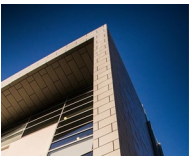
# What makes ITEP different?

- ITEP is a rigorous, accelerated program.
- ITEP is a full-time program.
- Students complete their B.A. and Credential as undergraduates.
- Students graduate *after* they complete their credential.
- Students are ready to work as teachers as soon as they graduate from ITEP!



# What does “full time” and “rigorous” look like?

- Students take 15 - 18 units each semester.
- Students have the **flexibility** to take the courses when they are offered.
  - They may take courses during the morning, afternoon, and night!
- Students expect to spend 2-3 hours per class studying *outside* of the scheduled class time.
  - Some classes also require fieldwork in an elementary classroom.





**A full course load is like a  
full-time job.**

	Monday	Tuesday	Wednesday	Thursday	Friday
8:00 AM					
9:00 AM					
10:00 AM					
11:00 AM	ENG 308		ENG 308		
12:00 PM					
1:00 PM		LBS 370		LBS 370	
2:00 PM					
3:00 PM					
4:00 PM		KIN 425		KIN 425	
5:00 PM					
6:00 PM		ENG 305	LBS 302	ENG 305	
7:00 PM					

# ITEP Expectations

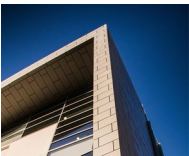
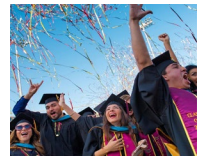
**Take 15-18 units (5-6 classes) each semester.**

**Take summer courses.**

**Maintain a G.P.A. of 2.67.**

**Pass the CBEST exam or other basic skills fulfillment before you apply to the credential program.**

**Apply to the credential program.**



## Year 1: Freshman Year @ CSUDH or Community College

→ Take lower division GE courses (approx. 18 units).

## Year 2: Sophomore Year @ CSUDH or Community College

→ Take lower division GE courses (approx. 18 units).

## Year 3: Junior Year @ CSUDH

→ Take major classes. Declare *ITEP Option* & follow ITEP program (approx. 18 units).

### Summer

Finish LBS major classes  
(6-9 units).

### Summer

Pass CBEST.  
Apply to Credential Program.

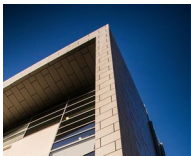
## Year 4: Senior Year @ CSUDH/ M.S. Credential Program

→ Complete methods classes and student teaching. (Full time)

# ITEP Expectations

**Students may take an additional semester and complete ITEP in 4.5 or 2.5 years.**

- ★ Students looking for more flexibility should complete the regular LBS program.
- ★ See the LBS Major Pathways document.



## B.A. PATHWAY

### Year 1

- Complete lower division GEs @ CSUDH or a community college.
- Move @ your own pace.

### Year 2

- Complete lower division GEs @ CSUDH or a community college.
- Move @ your own pace.

### Year 3

- Complete major courses in Liberal Studies.
- Declare LBS Depth of Study.
- Attempt the CBEST.
- Fulfill Graduation Writing Assessment Requirement (GWAR).
- Move @ your own pace.

### Year 4

- Complete major courses in Liberal Studies.
- Pass the CBEST.
- Decide if/when you will apply to a credential program.
- Move @ your own pace.

### Graduation w/ B.A. Degree

- Subject Matter Waiver is fulfilled w/ degree.
- Enter a credential program.
- You will be *intern ready*.

### Credential Program

- 1 additional year of coursework and student teaching.

## I.T.E.P. PATHWAY

### Year 1

- Complete lower division GEs @ CSUDH or a community college.
- Take 15 - 18 units.
- May take 1-2 summer classes.

### Year 2

- Complete lower division GEs @ CSUDH or a community college.
- Take 15 - 18 units.
- May take 1-2 summer classes.

### Year 3

- Complete major courses in Liberal Studies.
- Apply to I.T.E.P. program.
- Attempt and *pass* the CBEST.
- Fulfill Graduation Writing Assessment Requirement (GWAR).
- Take 15 - 18 units.
- Take 2-3 summer classes.
- Apply to credential program.

### Year 4

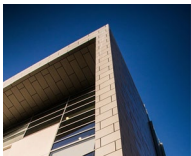
- Complete credential courses and student teaching.

### Graduation w/ B.A. Degree *and* Teaching Credential

- You will be qualified to apply for teaching jobs.

# Ask an ITEPer!

How are you balancing the full-time demands of the ITEP program?



A photograph of a traditional Japanese-style wooden arched bridge spanning a small pond in a lush garden. The bridge is made of weathered wood with a curved railing. The pond is surrounded by various green plants, including tall grasses and leafy shrubs. The background shows more trees and a fence. A bright yellow rectangular box is overlaid on the center of the image, containing the text 'ITEP SUMMER BRIDGE' in bold black letters.

**ITEP SUMMER BRIDGE**





## **Wrap around support for new ITEP transfer students.**

Ongoing communication and meetings.

Support for planning and registering for classes.

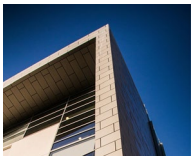
Navigating CSUDH resources and campus life.

Building relationships with other students!

# ITEP Summer Bridge

## Priority Application to ITEP Program.

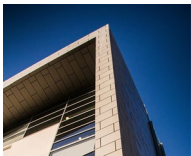
- Early access to the ITEP Application (May 15th).
- Attend ITEP Orientation Part 1 and Part 2.
- Build your ITEP Roadmap of classes and graduation plan before attending the New Student Orientation.
- Multiple check-ins to ask questions and clarify.



# ITEP Summer Bridge

## Ongoing Support for New Transfers

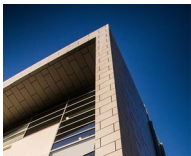
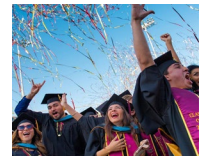
- Biweekly meetings throughout the summer, beginning in May:
  - ITEP Orientation
  - ITEP Roadmap Session
  - ITEP Advising/Course Enrollment
  - Fieldwork Workshop
  - Navigating CSUDH Resources
  - Faculty Meet and Greet
  - Social Networking
- Fall 2021 check-ins and support for adjusting to campus life.
- Connect with classmates, faculty, and resources!



# ITEP Summer Bridge

## Ongoing Support for New Transfers

- Biweekly meetings throughout the summer, beginning in May:
  - ITEP Orientation
  - ITEP Roadmap Session
  - ITEP Advising/Course Enrollment
  - Fieldwork Workshop
  - Navigating CSUDH Resources
  - Faculty Meet and Greet
  - Social Networking
- Fall 2021 check-ins and support for adjusting to campus life.
- Connect with classmates, faculty, and resources!



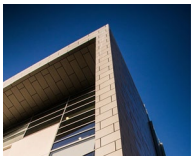
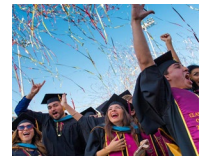
# ITEP Summer Bridge

## ***Optional Summer Class***

- Students may take LBS 203: Introduction to Education: Becoming a Transformative Educator.
  - This will help students accelerate their pathway to credential and graduation.
- The course will be offered through *Extended Education* for a cost of about \$1,000.
  - Unfortunately, financial aid will not cover the cost of a summer course before you are enrolled at CSUDH.
- Students may indicate their interest on the Summer Bridge Application.

*This is the only component of Summer Bridge that has a cost.*

*Participating in the Summer Bridge program is free.*

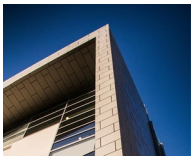


# ITEP Summer Bridge Application

HOW  
TO  
APPLY

## ITEP Summer Bridge

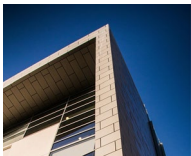
- Apply today!
- **Deadline: April 30, 2021**
- Online Application
  - **Link in chat!**



# Ask an ITEPer!

What was the transfer experience like for you?

What advice would you give future transfer students?



# Visit the ITEP Website



<https://sites.google.com/csudh-coe.org/csudhitep/home>



# Questions?

**Dr. Jen Stacy, ITEP Coordinator**

[jstacy@csudh.edu](mailto:jstacy@csudh.edu)

310.243.2323

COE 1431

ITEP Website:

<https://sites.google.com/csudh-coe.org/csudhitep>

