

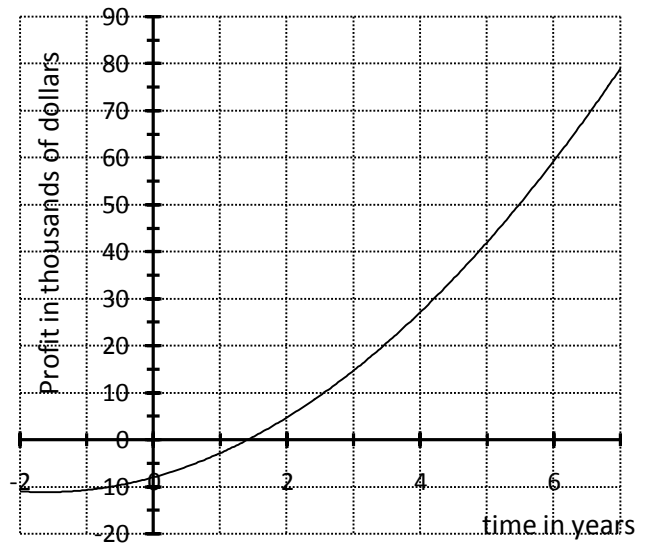
Math Problem 1: Compute $\frac{\sqrt{10^2 - 6^2}}{2 * 5}$ by hand. Then write the key stroke sequence you would use to enter this expression in your graphing calculator using the ENTER key only once. (Note: your calculator result should match your calculation. Write the value of this expression as a decimal and as a simplified fraction.

Decimal

Fraction

Math Problem 2: Interpreting graphs: The graph below shows the profit obtained by the L Company during the first 6 years of operation. Use the graph to answer the following questions:

- (a) The dependent variable is
- (b) The independent variable is
- (c) Estimate the profit (or loss) after the first year.
- (d) Estimate the profit (or loss) after 5 years
- (e) When does the company “break even”?
- (f) What window setting would you use to create this graph on your graphing calculator?

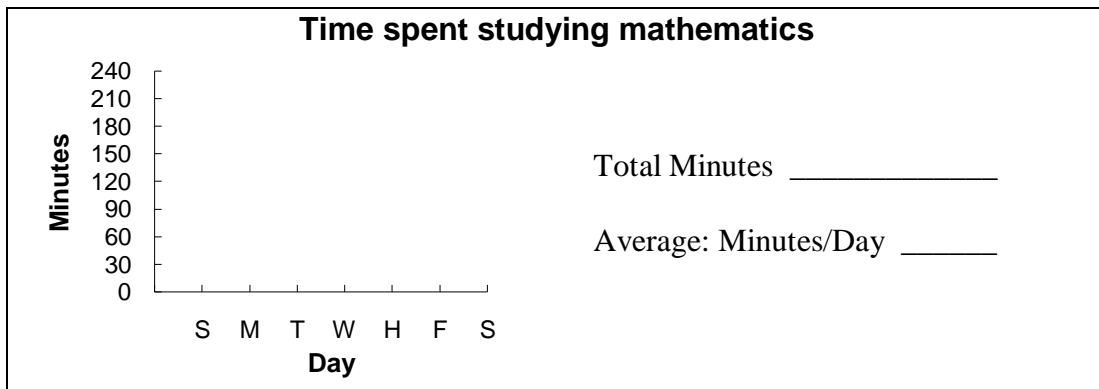


XMIN XMAX XSCL YMIN YMAX YSCL

Use complete sentences to answer the following:

Journal Topic 1: What is the most memorable experience you have had in a math class?

Journal Topic 2: What is your background in using a graphing calculator?



Comments/Observations on the Course and your Progress (optional).