

## Excel 3 Border Formatting Problem

Why are the lines blue and not orange????

Does your Excel 3 assignment look like this? Does it have blue lines on rows 3, 6, 14 and 16?

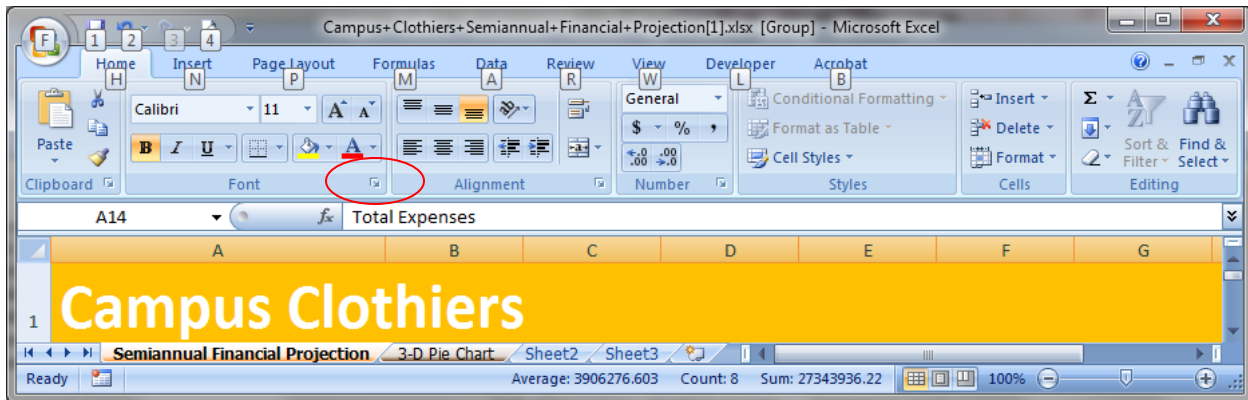
Campus Clothiers							
Semiannual Projected Gross Margin, Expenses, and Operating Income							
	January	February	March	April	May	June	Total
Sales	\$3,383,909.82	\$6,880,576.15	\$9,742,702.37	\$4,818,493.53	\$4,566,722.63	\$8,527,504.39	\$37,919,908.89
Cost of Goods Sold	1,319,724.83	2,683,424.70	3,799,653.92	1,879,212.48	1,781,021.83	3,325,726.71	14,788,764.47
Gross Margin	\$2,064,184.99	\$4,197,151.45	\$5,943,048.45	\$2,939,281.05	\$2,785,700.80	\$5,201,777.68	\$23,131,144.42
Expenses							
Bonus	\$0.00	\$100,000.00	\$100,000.00	\$100,000.00	\$0.00	\$100,000.00	\$400,000.00
Commission	109,977.07	223,618.72	316,637.83	156,601.04	148,418.49	277,143.89	1,232,397.04
Marketing	304,551.88	619,251.85	876,843.21	433,664.42	411,005.04	767,475.40	3,412,791.80
Research and Development	194,574.81	395,633.13	560,205.39	277,063.38	262,586.55	490,331.50	2,180,394.76
Support, General, and Administrative	575,264.67	1,169,697.95	1,656,259.40	819,143.90	776,342.85	1,449,675.75	6,446,384.51
Total Expenses	\$1,184,368.44	\$2,508,201.65	\$3,509,945.83	\$1,786,472.74	\$1,598,352.92	\$3,084,626.54	\$13,671,968.11
Operating Income	\$879,816.55	\$1,688,949.80	\$2,433,102.62	\$1,152,808.32	\$1,187,347.88	\$2,117,151.14	\$9,459,176.31
What-if Assumptions							

Here are the steps to fix it:

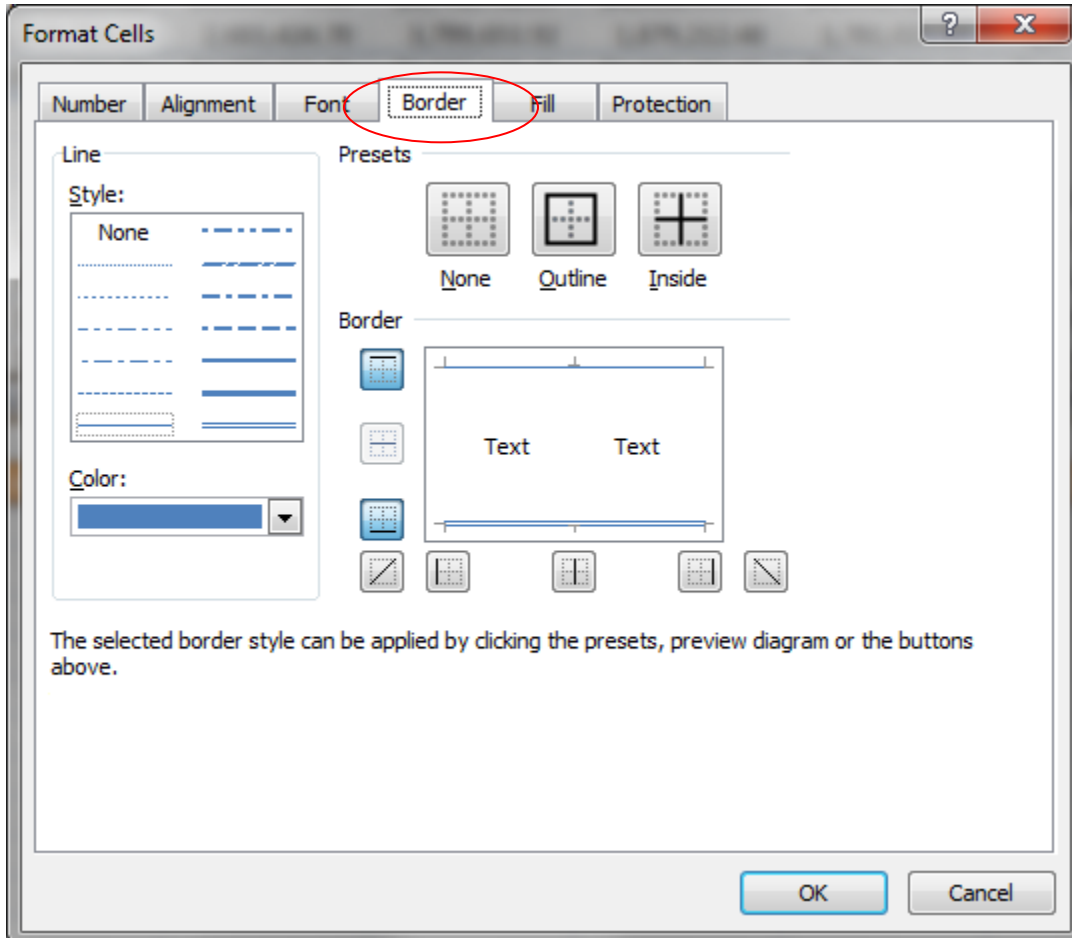
1. Select the cells. For example select cells A14:H14

## Excel 3 Border Formatting Problem

2. Click the Font dialog box launcher button in the Font group

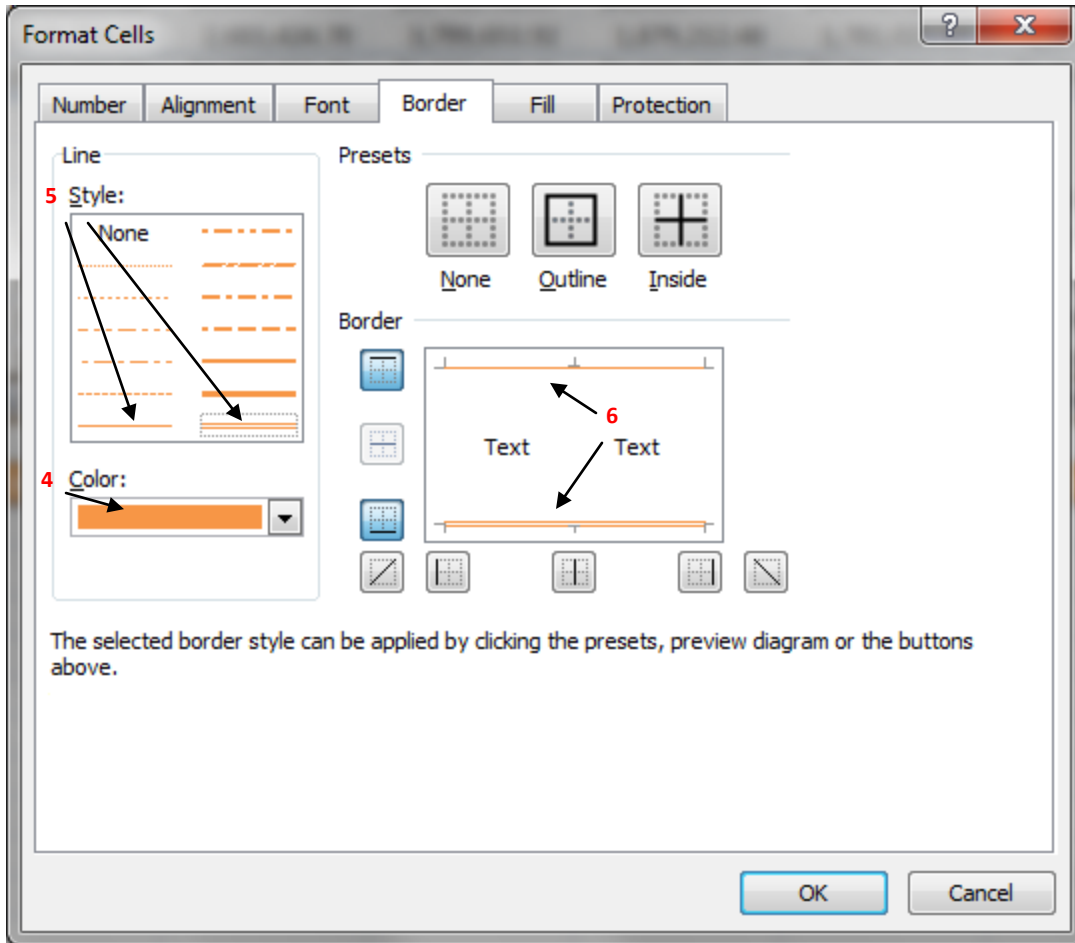


3. Click the Borders Tab



4. Click the correct color from the drop-down list
5. Click the line style
6. Click the line in the preview box on the right to apply the color.
7. Repeat steps 6 – 7 for each line.

### Excel 3 Border Formatting Problem



8. Click OK.
9. Repeat the steps above for the remaining blue lines in your worksheet.