

## Pasco Interface (Photogates)

1. The Pasco Capstone Interface:
  - a. Open the PCI and choose the photogate for your sensor.
  - b. Set the timing to operate like this (down arrow on Pre-Configured Timer to get Build Your Own):

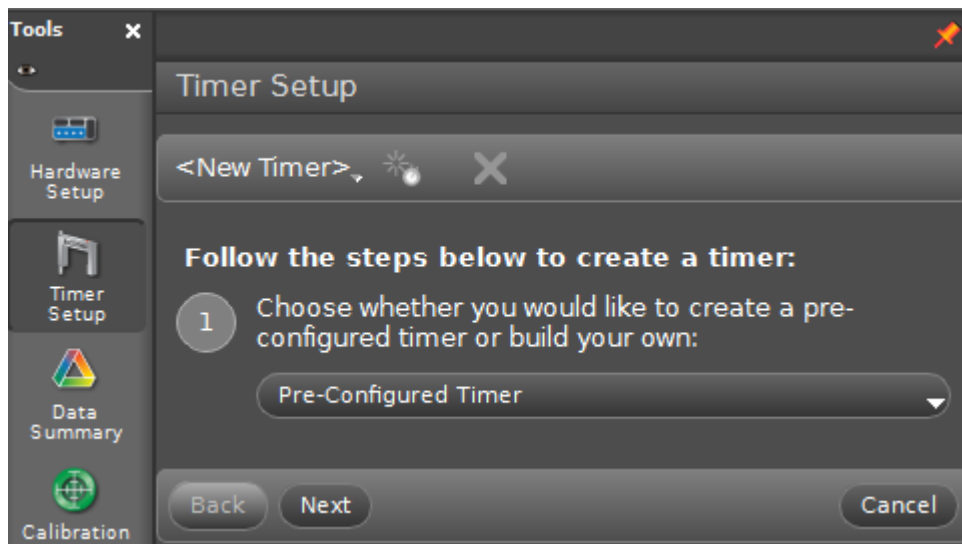


Figure 4

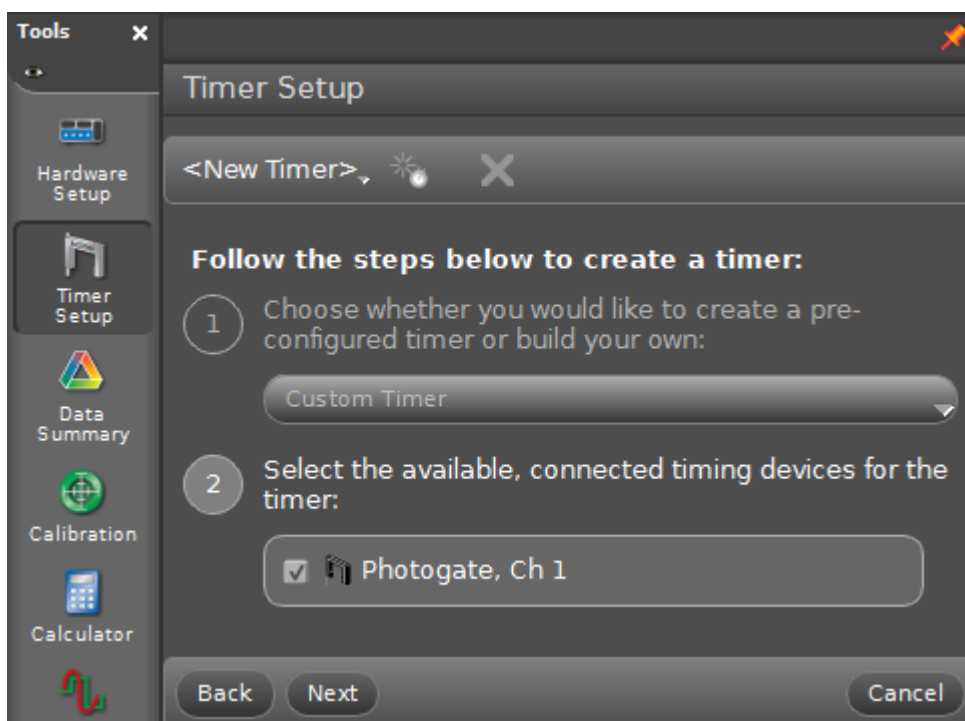


Figure 5

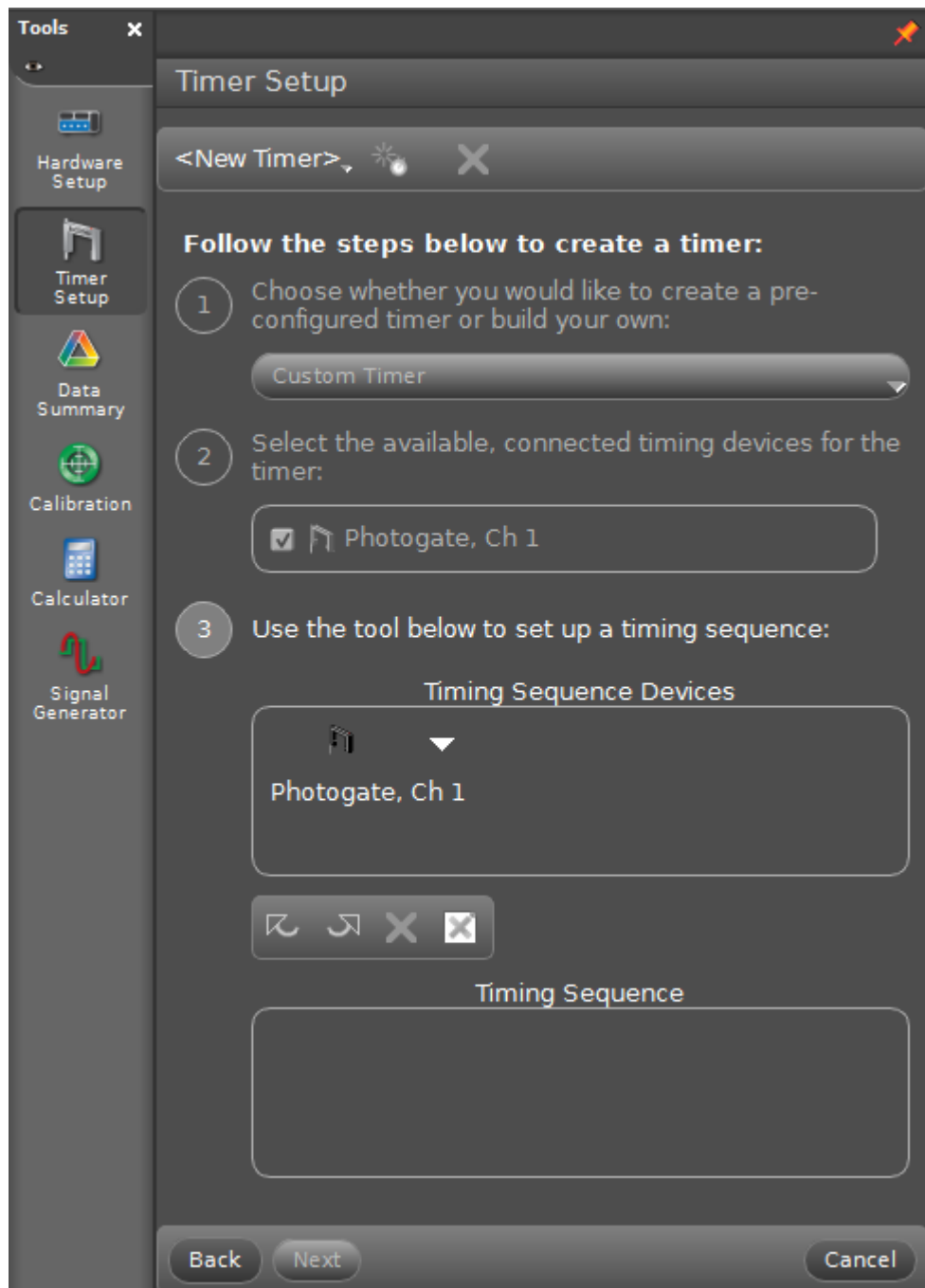


Figure 6

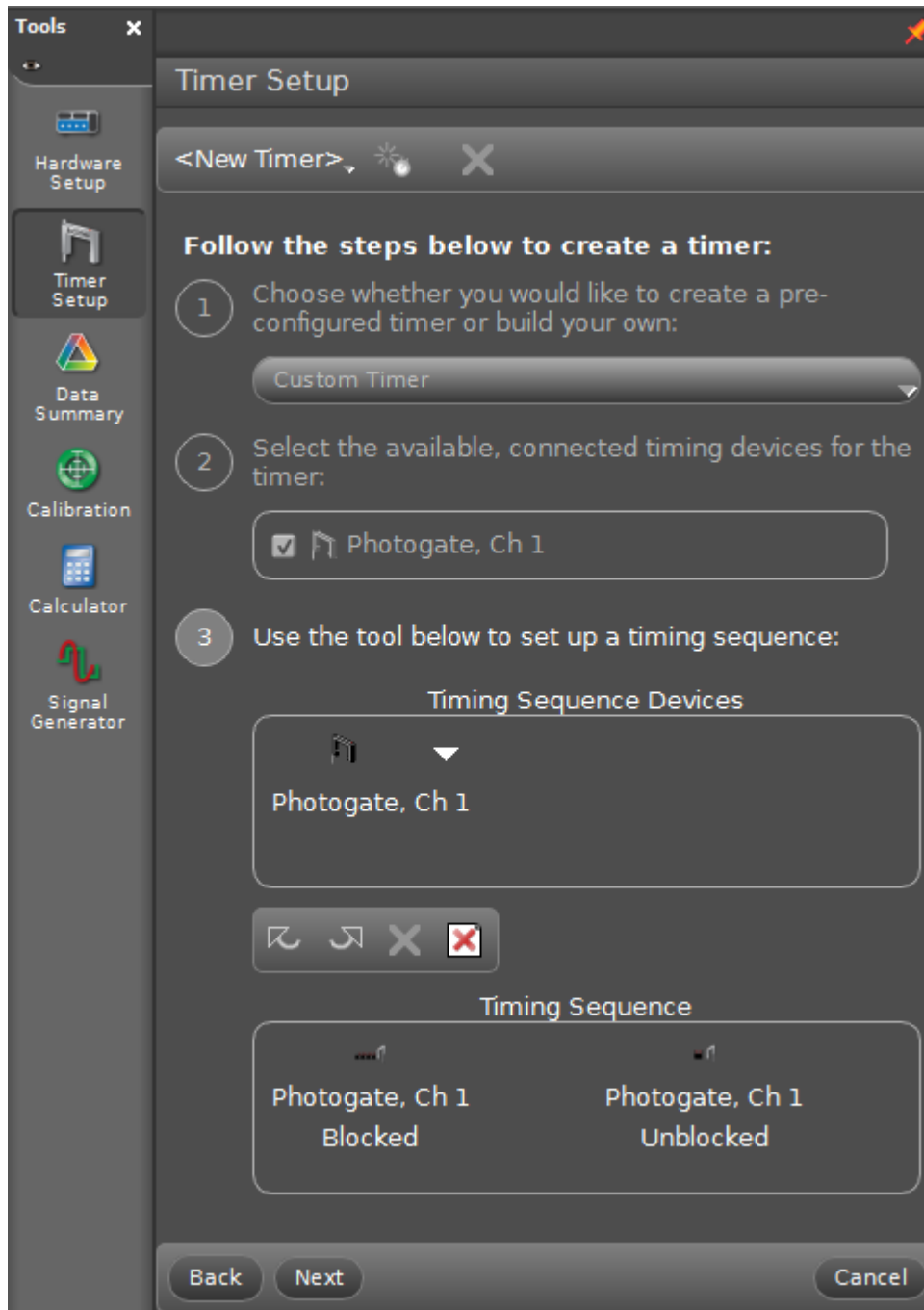


Figure 7

d. Use the little down arrow in the lower left for blocked, then again for unblocked.