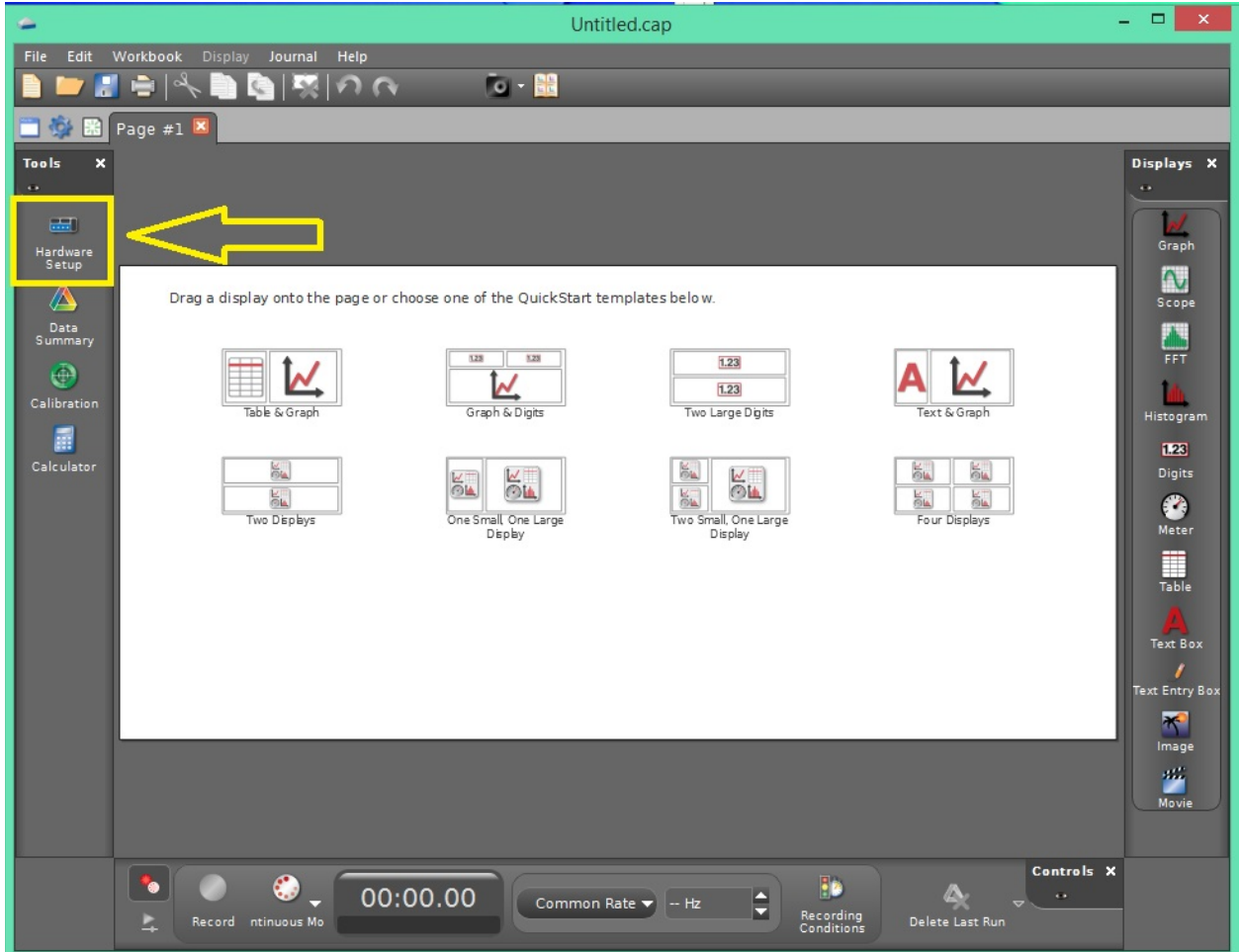
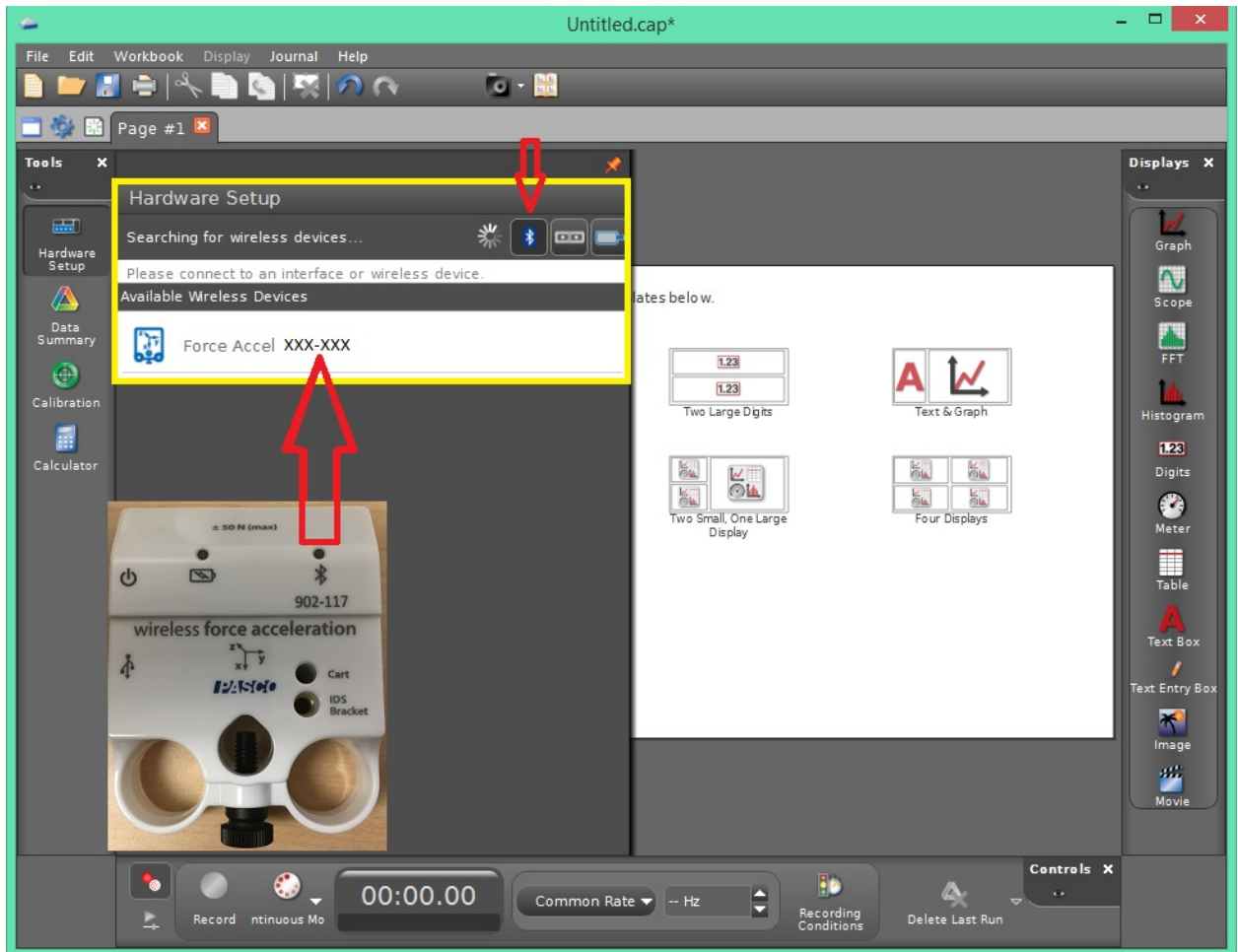


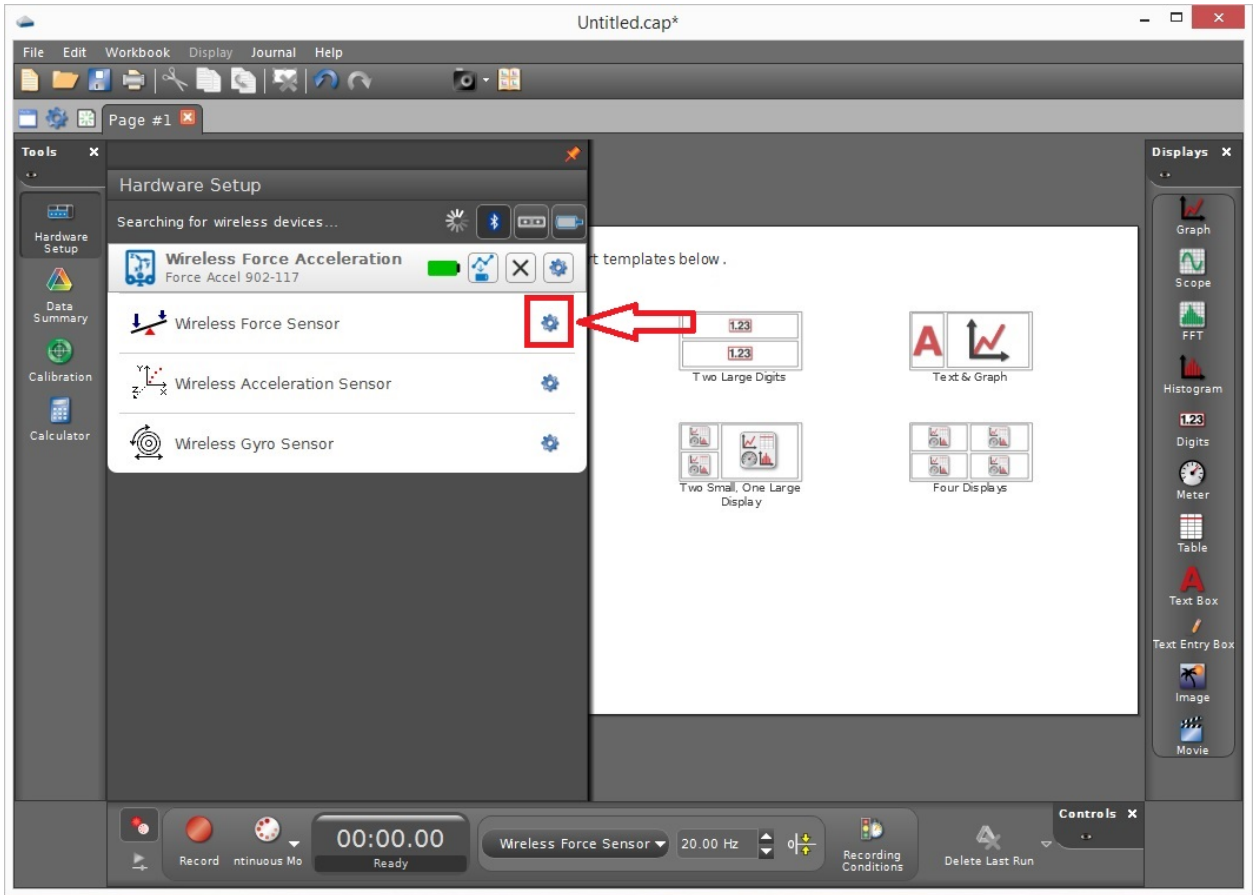
1. Plug the Bluetooth dongle into any available USB port.
2. Make sure that the wireless force sensor is turned on. Press the button on the left side of the sensor. You should see a red blinking LED over the Bluetooth logo come on. The sensor is now in discovery mode.
3. Click on **Hardware Setup**. This will allow you to pair the wireless force sensor to the computer.



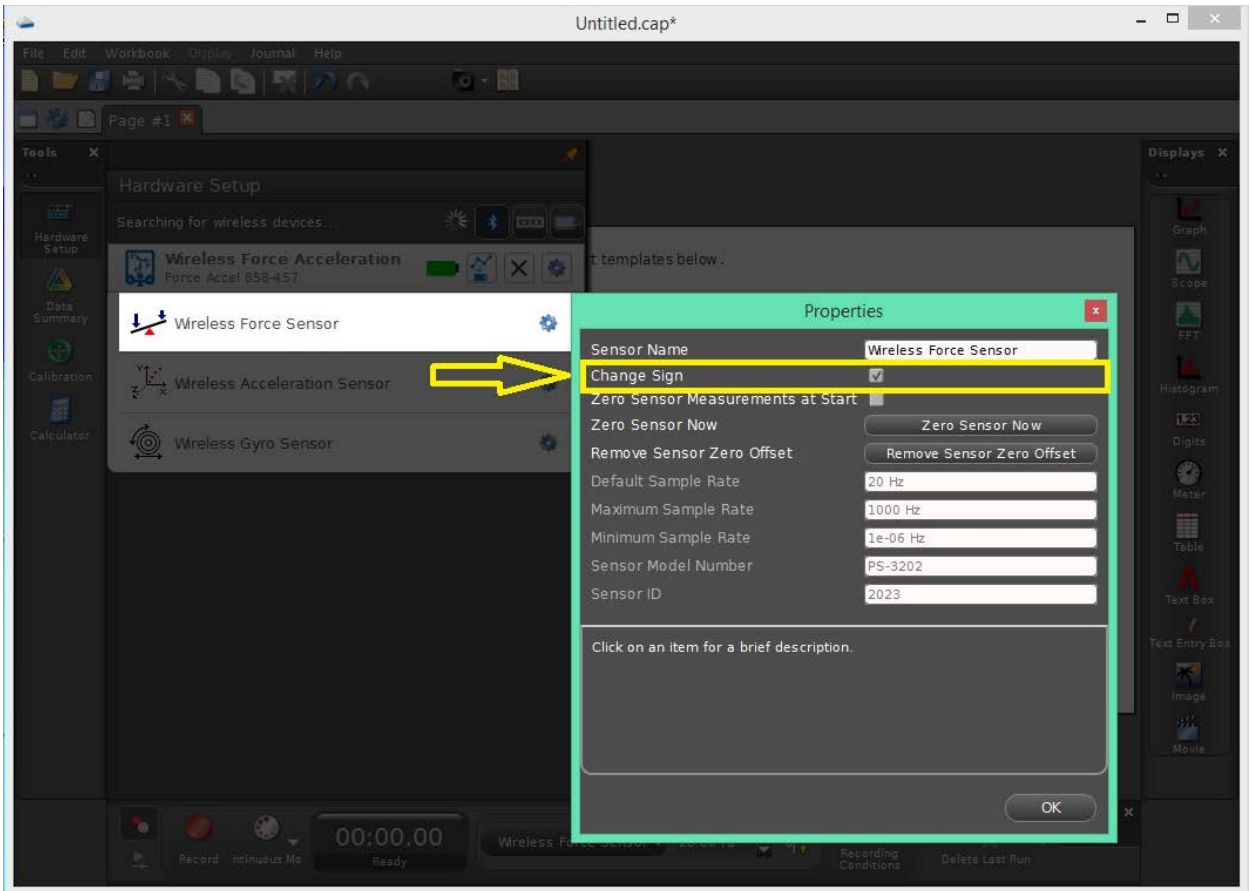
4. A small panel will slide out with the message "Searching for wireless devices..." You should see "**Force Accel XXX-XXX**" under the **Available Wireless Devices** section, where XXX-XXX is a series of numbers that are located under the blinking Bluetooth status LED on the wireless force sensor. **NOTE: If you don't see any available wireless devices, make sure that you click on the Bluetooth icon (under the small red arrow pointing downwards). MAKE SURE THAT THE NUMBER ON YOUR WIRELESS FORCE SENSOR MATCHES THE NUMBER ON THE PANEL, OTHERWISE YOU WILL NOT BE REGISTERING THE CORRECT SENSOR ON YOUR COMPUTER.**



5. Click on the device once you have confirmed that it matches the number of the sensor that you have. You should see a message stating that the device is being connected. Once successfully connected, you should see the device's battery indicator (which should be fully-charged) and configuration button (a gear icon). Click on the gear icon next to **WIRELESS FORCE SENSOR** portion of the sensor's status pane.



6. Make sure there is a check mark on the **Change Sign** box, which is located directly under the **Sensor Name** dialog box.



7. Your sensor is now ready to take data!