



Safe Return to Campus

We're not all on campus together, but for our small crew working on site and for CTE students taking labs, we are following national and state guidelines to stay safe.

Here's what we're up to:

1. Social distancing (6' feet apart or more)
2. Mandatory face coverings on campus at all times
3. New foot traffic flows to reduce exposure
4. Limited parking
5. Required daily health screenings
6. Mandatory reporting for COVID-19 cases
7. Disinfecting high traffic areas, offices, restrooms, and classrooms

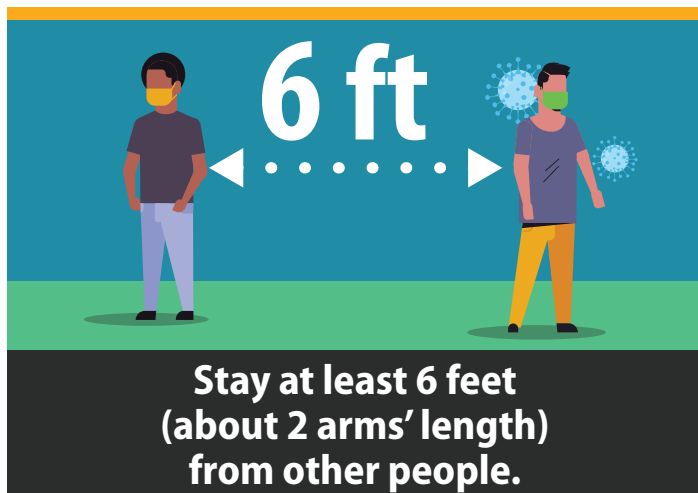
Read our full [Return-to-Campus Plan](#) for more details.

Remember, whether you are at work or not **wear a mask, wash your hands, and keep your distance.**
#SaferTogether



Stop the Spread of Germs

Help prevent the spread of respiratory diseases like COVID-19.



cdc.gov/coronavirus